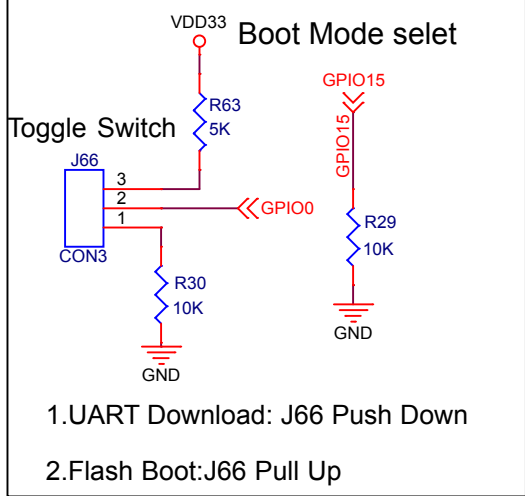
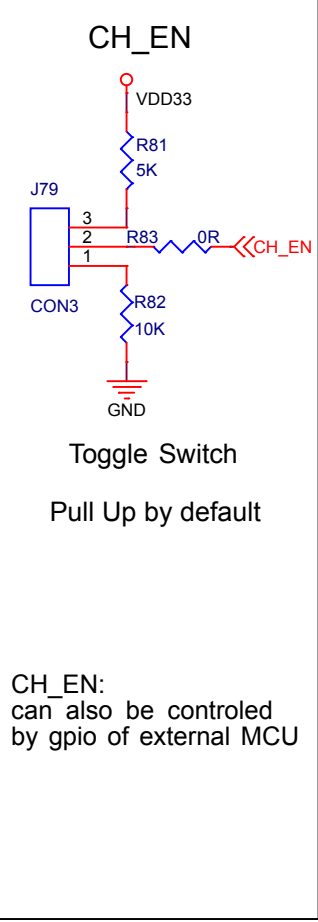
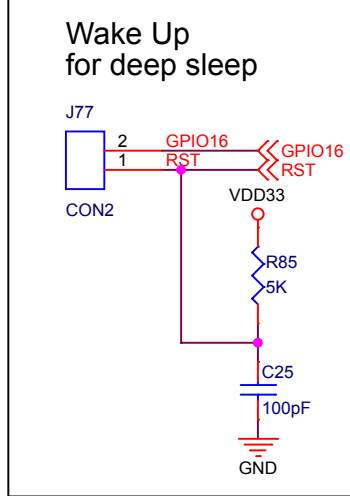
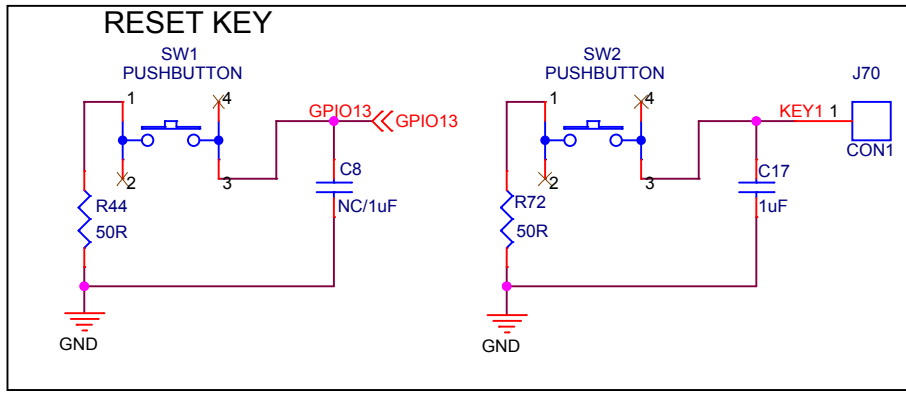


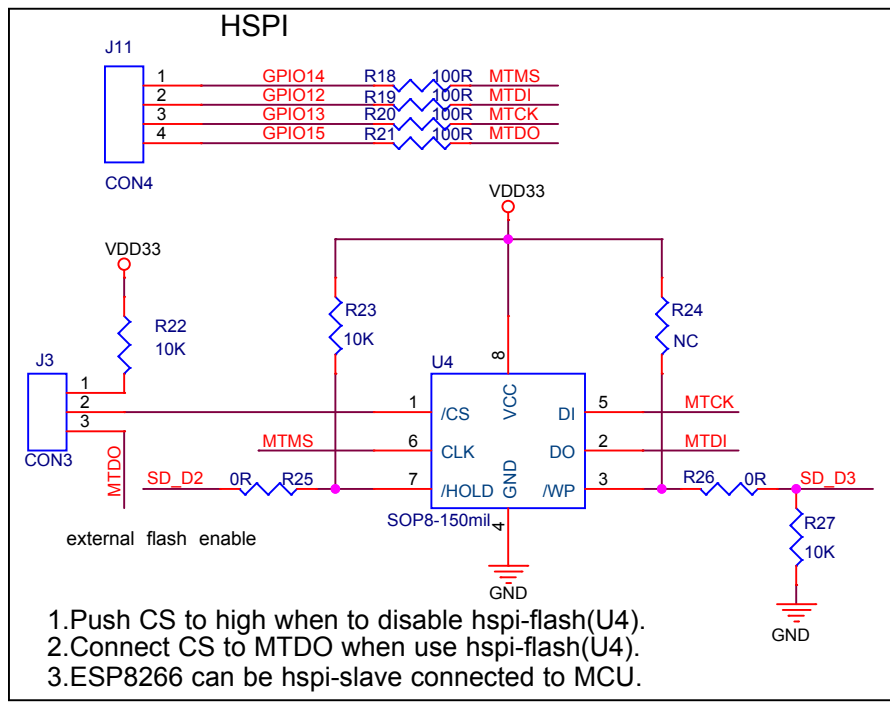
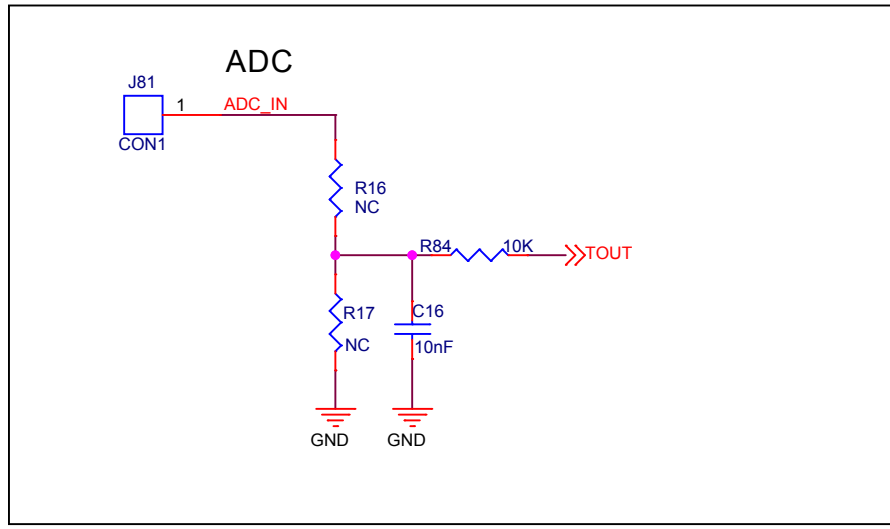
- 1.Normal:use R1 R3 R5 R7
- 2. Swap: use R2 R4 R6 R8
(for cancelling log print when power on)
- 3.Flow control: short J14 and J67



- 1.UART Download: J66 Push Down
- 2.Flash Boot:J66 Pull Up



CH_EN:
can also be controlled
by gpio of external MCU



- 1.Push CS to high when to disable hspi-flash(U4).
- 2.Connect CS to MTDO when use hspi-flash(U4).
- 3.ESP8266 can be hspi-slave connected to MCU.

